



MNC

WATER FILTERS

Whole House Filtration System

Unmatched Components, Unbeatable Performance and Unique Benefits!

1

PFAS Protection

PFOS & PFOA Protection for Every Tap

2

Cleaner, Better-Tasting Water

Eliminates chlorine taste and odors house-wide.

3

Protects Plumbing & Appliances

Stops scale, rust, and sediment damage early.

4

Proven to Work in Real Life

Tested over thousands of litres, not one sample.

5

Durable Housing & SuperSeal™ Design

Stronger housing and smarter seal for lasting protection.



(POE) - Part 1

AquaCo Triple Premium PFAS

OUR SOLUTION



(POU) - Part 2 (Optional)

AquaCo Compact RO



Premium Whole House Water Filters

BOTH

Compact RO

Human Eye
1000µm | 100µm

Optical Microscope
10µm | 1µm

Scanning Electron Microscope
0.1µm | 0.01µm

ST Microscope
0.001µm (1nm) | 0.0001µm (0.1nm)

Microplastics

Sand Particles

Fine Dust

Viruses

Hormones

Fluoride Ions

Mold Spores

Antibiotics

Dissolved Salts

BPA

Human Hair

Parasites

Toxic Heavy Metal Ions

PFAS & PFOS

Milled Flour

Bacteria

Arsenic

Bloodworms

Insect Eggs

Pesticides

Calcium Hardness

Dye, Gelatin & Pigment



Just A Few Visible Benefits...



- ✓ 80% Visible Scale Build Up Reduction
- ✓ Fewer Stains on the Shower Screens
- ✓ No Crusty Deposits



- ✓ Hair & Skin Feel Softer
- ✓ Better Lather
- ✓ Cleaner Jet Sprays
- ✓ Supports Healthy Lungs



- ✓ Water Feels Softer
- ✓ Protects Sensitive Skin
- ✓ Supports Healthy Teeth
- ✓ Purified Water from Every Tap



- ✓ Less Scrubbing
- ✓ Better Soap Action
- ✓ Protects Bathroom & Plumbing



- ✓ Reduces Spotting on your Car
- ✓ Prevents Iron Stains



- ✓ pH>8 (Alkaline Water)
- ✓ Mineralised Drinking Water
- ✓ Better Tasting Tea & Coffee
- ✓ Supports Healthy Gut Flora



- ✓ Shinier Dishes
- ✓ Prevents Corrosion
- ✓ Longer Lasting Appliances
- ✓ Protects Coffee Machines



- ✓ Softer Clothes with Less Detergent
- ✓ More Effective Heating
- ✓ Protects Appliances Heating Elements



- ✓ Protects Tapware and Plumbing Fixtures
- ✓ Shinier Surfaces
- ✓ Water Smells Better and Tastes Better



- ✓ Protects Ice Machines
- ✓ Protects Water Dispensers
- ✓ Better Tasting Ice
- ✓ Colourless Ice

AquaCo.
1300 70 1300



Don't Be Fooled by Microns — Look for Real Protection!

Although our filters physically remove particles down to **2 microns**, their advanced technology goes far further. **Viruses, bacteria, and parasites — all much smaller than 2 microns — are effectively captured through electro-adsorption technology**, which binds and removes contaminants at the sub-micron and even ionic level. This means you're protected not just from visible particles, but also from the invisible threats that matter most to your family's health.

Micron ratings were once a selling point, but today they are outdated and misleading because:

- They only apply to sediment.
- They don't show true removal efficiency.
- They don't cover chemicals, heavy metals, or PFAS.
- **True protection isn't about microns** — modern filters use adsorption and electro-adsorption to trap contaminants too small to measure by size.
- What matters now is independent certification for the contaminants that impact your health and home.

How Our 3-Stage Premium PFAS Filtration Works

✓ 7 Layers of Protection — Explained



Stage 1 – ScaleStop® Sediment Filter (Multi-layer Protection)

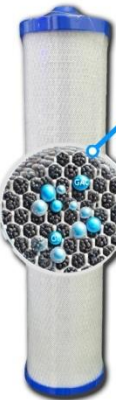
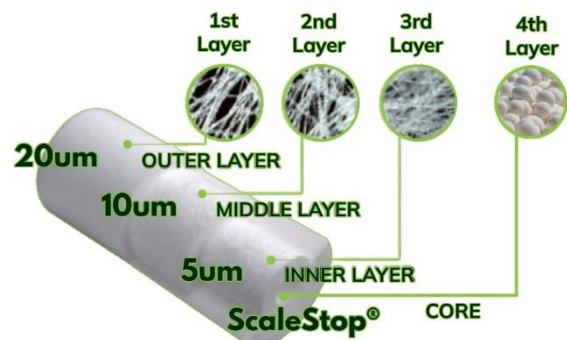
1st Layer — 20-micron outer layer – Coarse sediment removal

2nd Layer — 10-micron middle layer – Medium sediment removal

3rd Layer — 5-micron inner layer – Fine sediment removal

4th Layer — ScaleStop® core – Anti-scale protection to reduce calcium build-up

Filtration Technologies: Mechanical + Conditioning



Stage 2 – Coconut Shell Carbon Filter

5th Layer — 5-micron activated carbon block – Removes chlorine, chemicals, taste, and odour.

Filtration Technologies: Mechanical + Adsorption



Stage 3 – Disruptor® Filter

6th Layer — 2-micron premium-grade catalytic carbon – Targets PFAS compounds, heavy metals, chemicals, taste, and odour.

7th Layer — **Core: Precision membrane** – Its powerful electrostatic charge field removes pathogens, including bacteria, viruses, and parasites, at submicron levels, without having to be submicron.

Filtration Technologies: Mechanical + Adsorption + Electroadsorption + Bacteriostatic



Triple Premium PFAS Whole House Filtration System

Stainless Steel Oil Filled Pressure Gauges

- ✓ Sun-resistant.
- ✓ Corrosion-resistant.
- ✓ Monitor incoming and outgoing water pressure.
- ✓ Stainless Steel oil filled pressure gauges for maximum precision and durability.

316 Marine Grade Stainless Steel Cover

- ✓ High-quality, anticorrosive, and weather-resistant. Designed to protect equipment in extreme conditions keeping filters and housings cool.
- ✓ Unlike plastic covers, it won't discolor or become brittle.

Note: Use **durable** and **sun-resistant** components. Painted covers and powder coated brackets can corrode, crack and peel off over time.

316 Marine Grade Stainless Steel Bracket

- ✓ Designed to protect equipment in extreme conditions.
- ✓ Corrosion resistant.

-COOL!-

Stainless steel has higher reflectivity, meaning it absorbs less heat from sunlight compared to plastic. In contrast, plastic absorbs more solar radiation and can reach significantly higher temperatures under the same conditions.

For example, an experiment we conducted on a 32°C day, we placed both materials in direct sunlight and measured their surface temperatures.

Results:

- ✓ Stainless Steel Cover: 27°C
- ✗ Plastic Cover: 50°C

Stainless Steel Reinforced Ports

- ✓ 316 Marine Grade Stainless Steel reinforced heads prevent leaks, cracks and material fatigue after years of use under pressure.



PP Caps with Superior Super-Seal

- ✓ PP caps for maximum strength and durability.



- ✓ Our super-seal mechanism protects the washers from being damaged when tightening the housings preventing water bypass.

Stainless Steel Stand and Frame

- ✓ Corrosion resistant.
- ✓ Designed to protect equipment in extreme conditions. Powder coated brackets rust over time.
- ✓ A full Stainless-Steel Frame gives rigidity to the system, protecting the heads and pipework from stress when replacing the filters.

20" x 4.5" Filters

- ✓ 20" filters have 100% more capacity compared to 10" x 4.5" filters.
- ✓ Filters last up to 18 months compared to 6 to 9 months for 10" and 15".



ScaleStop® Sediment Filter

- ✓ Anti-Scale Technology: Inhibits hard mineral buildup.
- ✓ Triple gradient sediment filter.
- ✓ 100% polypropylene.
- ✓ Removes sediment, dust, dirt, rust, sand, silt, and algae.

Chlorine, Taste and Odour Removal

- ✓ Pure Coconut Shell Activated Carbon.
- ✓ Removes chlorine, volatile organic compounds, pesticides, herbicides, taste and odour from water.

Disruptor® Filter

- ✓ Combines 4 filtration methods: electro-adsorption, mechanical, sorption and bacteriostatic filtration methods.
- ✓ Serves as a polishing carbon filter, effectively removing any residual chlorine left after the second filtration stage.



Reduction Claim

- ✓ PFOA (Perfluorooctanoic Acid) > 98.9%
- ✓ PFOS (Perfluorooctane Sulfonic Acid) > 99.0%
- ✓ Total Chlorine (Chloramines) > 99.3%
- ✓ Free Chlorine > 99.5%
- ✓ Lead (Pb) > 99.4% @pH 6.5
- ✓ Lead (Pb) > 99.4% @pH 8.5
- ✓ Copper (Cu) > 99.9% @pH 8.5
- ✓ Copper (Cu) > 99.9% @pH 6.5
- ✓ E.Coli (Total Coliforms) > 99.9999%
- ✓ Coliphage (Bacterial Virus) 99.9995%

FOR PFAS, FLUORIDE, HARDNESS REMOVAL AND MORE...

For customers looking for alkaline water (pH>9), a 99.99% fluoride and hardness removal as well as sweet tasting water (Bottled-like Water). The purchase, installation and maintenance of the system will be a fraction of a full-size reverse osmosis.

Certified Reduction Claim:

- ✓ Fluoride
 - ✓ Nitrates & Salt
 - ✓ Calcium Hardness
 - ✓ Arsenic
 - ✓ Urea (Urine Compounds)
 - ✓ Microorganisms
 - ✓ Pharmaceuticals
 - o Antibiotics
 - o Hormones
 - ✓ PFAS (Flame Retardants)
 - ✓ Endocrine Disrupting Chemicals (EDC)
 - o BPA
- ✓ Total Dissolved Solids (TDS)
 - o Organic Compounds
 - Aniline
 - Biphenyl
 - Caffeine
 - Chloroform
 - o Inorganic Compounds
 - Calcium Carbonate
 - Magnesium
 - Sodium Bicarbonate
 - Sodium Bromide
 - Sodium Chloride
 - Sodium Cyanide
 - Sodium Fluoride
 - Sulfates
 - Silica
 - Phosphoric Acid



FAQs

Where is it installed?

Most installations are on the side wall of your house, after the side gate, next to the water heater or in the garage. The location of the system will be discussed with you on the day of the installation.

Does it include the bypass?

All installations include the bypass to allow unfiltered or filtered water to go into the property. Also a bypass is needed when servicing or replacing your filters.

Does it lower my pressure?

In over 99% of installations, our customers report no significant pressure drop using our Whole House Water Filters. With the built-in pressure gauges, you can effortlessly monitor both incoming and outgoing water pressure, making it easy to determine if any pressure variations arise from the system itself.

Multi-Stage Whole House Water Filtration System with Stainless Steel Cover



Technical Specifications

Max Flow Rate: 60 LPM
Connection Type: 1" or 3/4" Ports
Operating Pressure: 70 psi
Maximum Pressure: 70 psi
Minimum Pressure: 30 psi
Operating Temperature: 2°C - 52°C

Fully Automatic Water Softener with Multi-Stage Pre-Filtration System and Stainless Steel Cover



Technical Specifications

Max Flow Rate: 40 LPM
Connection Type: 3/4" Ports
Operating Pressure: 70 psi
Maximum Pressure: 70 psi
Minimum Pressure: 30 psi
Operating Temperature: 2°C - 52°C



Choose Long Lasting Components, Choose AquaCo!

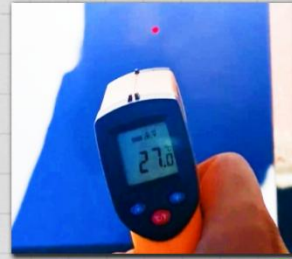
316 Marine Grade Stainless Steel Cover



The 316 Marine Grade Stainless Steel Cover is corrosion resistant and designed to protect equipment in extreme conditions. Also, when exposed to the same amount of heat, Stainless Steel conducts heat much more effectively than plastic, resulting in slower heating and a lower maximum temperature.

A shield, protecting the filter and its components from physical damage, potential UV degradation, or any other external factors that might compromise the filter's functionality or lifespan.

✓ Stainless Steel Cover =
Cool under the sun



Plastic Cover =
Hot under the sun



✓ Stainless Steel Cover =
Long-Lasting Housings



No Cover = Brittle &
Discoloured Housings



316 Marine Grade Stainless Steel Bracket, Frame & Gauges



Crafted from premium 316 Marine Grade Stainless Steel, the frame, bracket, and gauges offer exceptional durability, superior sun resistance, and outstanding protection against corrosion.

The sturdy frame ensures system rigidity, safeguarding the heads and pipework from stress during filter replacements.

Additionally, the stainless steel oil-filled pressure gauges deliver maximum precision and long-lasting durability, making this system both reliable and robust.



✓ SS Frame & Bracket =
Highly Anticorrosive



Powder Coated Frames &
Covers = Rust, Crack & Peel



✓ SS Pressure Gauges =
Strong & Corrosion Resistant



Plastic Gauges =
Discoloured & Brittle Gauges

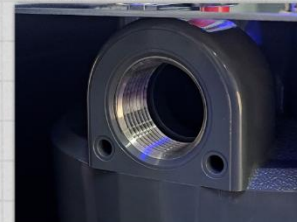


316 Marine Grade Stainless Steel-Reinforced Heads



Stainless Steel-reinforced heads prevent leaks, cracks and material fatigue after years of use under pressure. Dezincified brass ports can leach zinc into the water and degrade in harsh environments.

✓ SS Reinforced Heads =
Heavy-duty & Long-lasting



Plastic Ports =
Crack & Leak



Super-Seal Cap



Nipples in the caps provide a more secure and tighter seal compared to flat washers by sealing and compressing on the outside of the nipple (unfiltered water side) using a beveled edge instead of a sharp seal that usually cuts through the washer.

✓ Super-Seal =
Better Seal & No
Contamination



Flat Washers =
Deteriorate, Release
Microplastics & Grow Mold



CAUTION! Stay away from POOR DESIGNS and FALSE DISCOUNTS!

1
PFAS Protection
PFOS & PFOA Protection for Every Tap

2
Cleaner, Better-Tasting Water
Eliminates chlorine taste and odors house-wide.

3
Protects Plumbing & Appliances
Stops scale, rust, and sediment damage early.

4
Proven to Work in Real Life
Tested over thousands of litres, not one sample.

5
Durable Housing & SuperSeal™ Design
Stronger housing and smarter seal for lasting protection.

WHOLE HOUSE WATER FILTERS

Multi-Stage Whole House Water Filtration System with Stainless Steel Cover

Multi-Stage Whole House Water Filtration System with Stainless Steel Cover w/ Compact Reverse Osmosis



PREMIUM

Reduces visible scale build up and removes PFAS Compounds.



PREMIUM PFAS



PREMIUM PFAS W/ RO COMP

Removes over 1,000 contaminants, including 99% of FLUORIDE, total dissolved solids (TDS), nitrates, salts, silica and more.



Adds Essential Minerals

Certified Reduction Claim

Sediments	✓	✓	✓
Chlorine & Chloramines	✓	✓	✓
Pesticides & Herbicides	✓	✓	✓
Flammable Liquids (VOCs)	✓	✓	✓
Taste, Odours & Colour	✓	✓	✓
Heavy Metals (Copper, Iron, Lead...)	✓	✓	✓
Parasites, Bacteria & Viruses	✓	✓	✓
PFAS Compounds	✗	✓	✓
Visible Calcium Scale	60%	>80%	>80%
Fluoride	✗	✗	✓ (Compact Reverse Osmosis)
Total Dissolved Solids (TDS)	✗	✗	✓ (Compact Reverse Osmosis)